

DISTRIBUTION TRANSFORMERS

11 000/420 Volt Three Phase



Typical Data:

Transformer For Industrial Applications: Manufactured and Tested The Design

The Large Robust Radiators

Short Circuit Tested to

Customise with Accessories

SANS IEC 613781 standard
Will ensure that the unit will withstand the typically high electrical stresses
Quickly dissipate any heat created by extra losses that are normally caused by "Eddy" currents
SANS 780-IEC 60076-5 and Eskom specific 34-346
Please contact us for a full list of accessories

Approximate Dimensions:

Length: 1 545mm
Width: 1 125mm
Height: 835mm

Example of the Rating Plate:

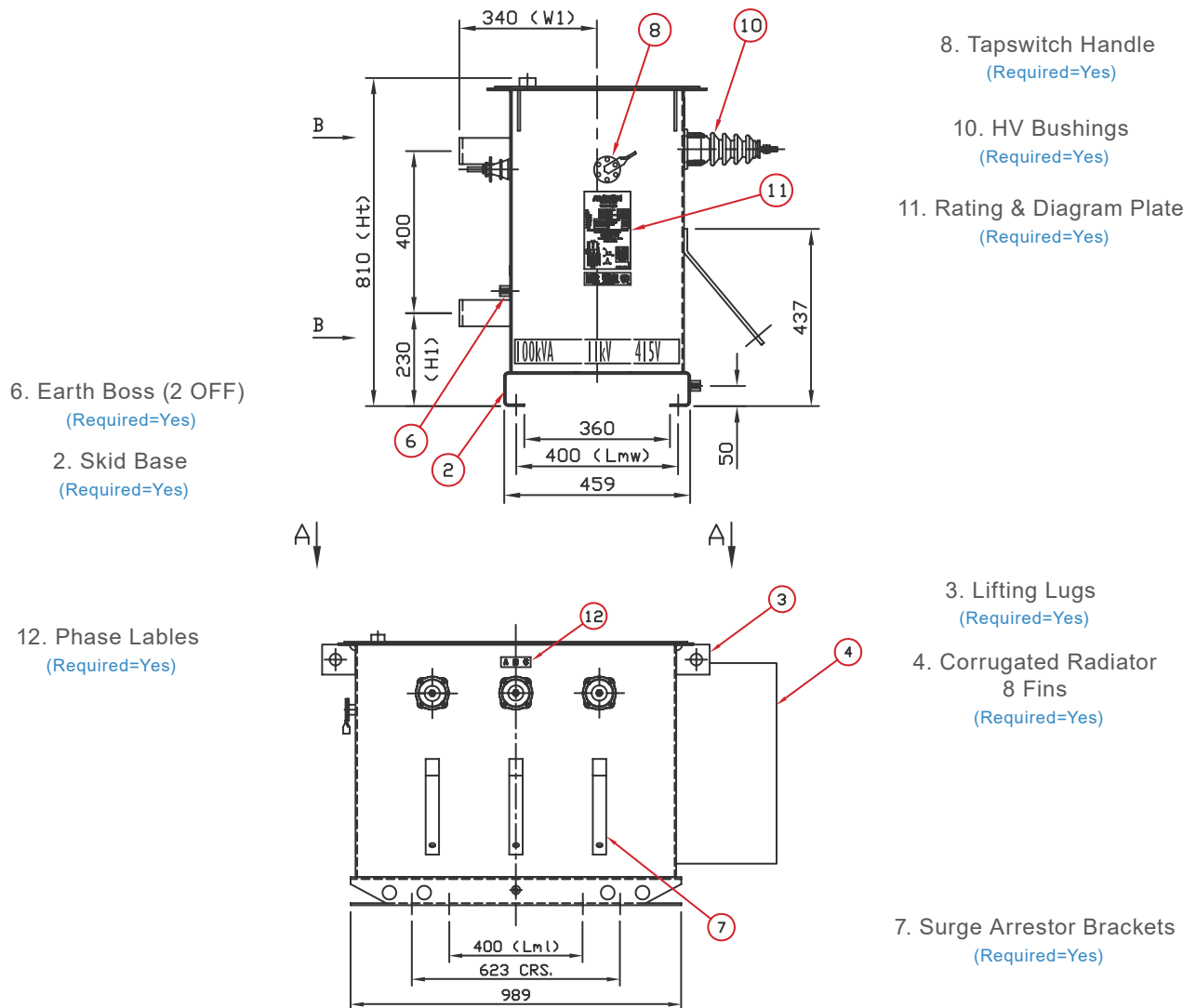
ACTOM															
LVD DISTRIBUTION TRANSFORMERS															
KVA	250	VOLTS HV LV	25000 415												
PHASE	3	AMPERES	0.25 978												
IMPEDANCE	4.00	WINDINGS HV/LV	AL AL												
FREQUENCY	50 HZ	COOLING	UNFAN												
SERIAL NO.	1000000	YEAR BUILT/NO OF BUILT	2018/50												
ORDER NO.	1115997	CORE & WINDING	450												
CUSTOMER	ACTOM ELEC PRODUCTS	TOTAL MASS	145												
SAP No.		CR	247												
<p>MANUFACTURED IN ACCORDANCE WITH FACOM APPLICATION 34.346 87/0/0</p> <p>OIL CONTAINS NO TRACE OF PCB'S</p> <p>VENTILATE TANK INTERIOR BEFORE REMOVING PRESSURE COVER</p> <p>TO REF P18 LFDI (REFS) P18 L VACUUM TERMINAL BARRIERS</p>															
		<table border="1"> <thead> <tr> <th>H.V. %</th> <th>SWITCH POSITION</th> </tr> </thead> <tbody> <tr> <td>106</td> <td>1</td> </tr> <tr> <td>103</td> <td>2</td> </tr> <tr> <td>100</td> <td>3</td> </tr> <tr> <td>97</td> <td>4</td> </tr> <tr> <td>94</td> <td>5</td> </tr> </tbody> </table>		H.V. %	SWITCH POSITION	106	1	103	2	100	3	97	4	94	5
H.V. %	SWITCH POSITION														
106	1														
103	2														
100	3														
97	4														
94	5														
		<p>VECTOR SYMBOL Dyn 11</p>													
SANS 780 27033															

Product Data:
Rating 25 - 800 KVA
Voltage 415 - 420 V
Impedance 3.6% - 5%
Number of Phases Three

DISTRIBUTION TRANSFORMERS

11 000/420 Volt Three Phase

General Third Angle Projection (Scale 1:10)



Additional Information:

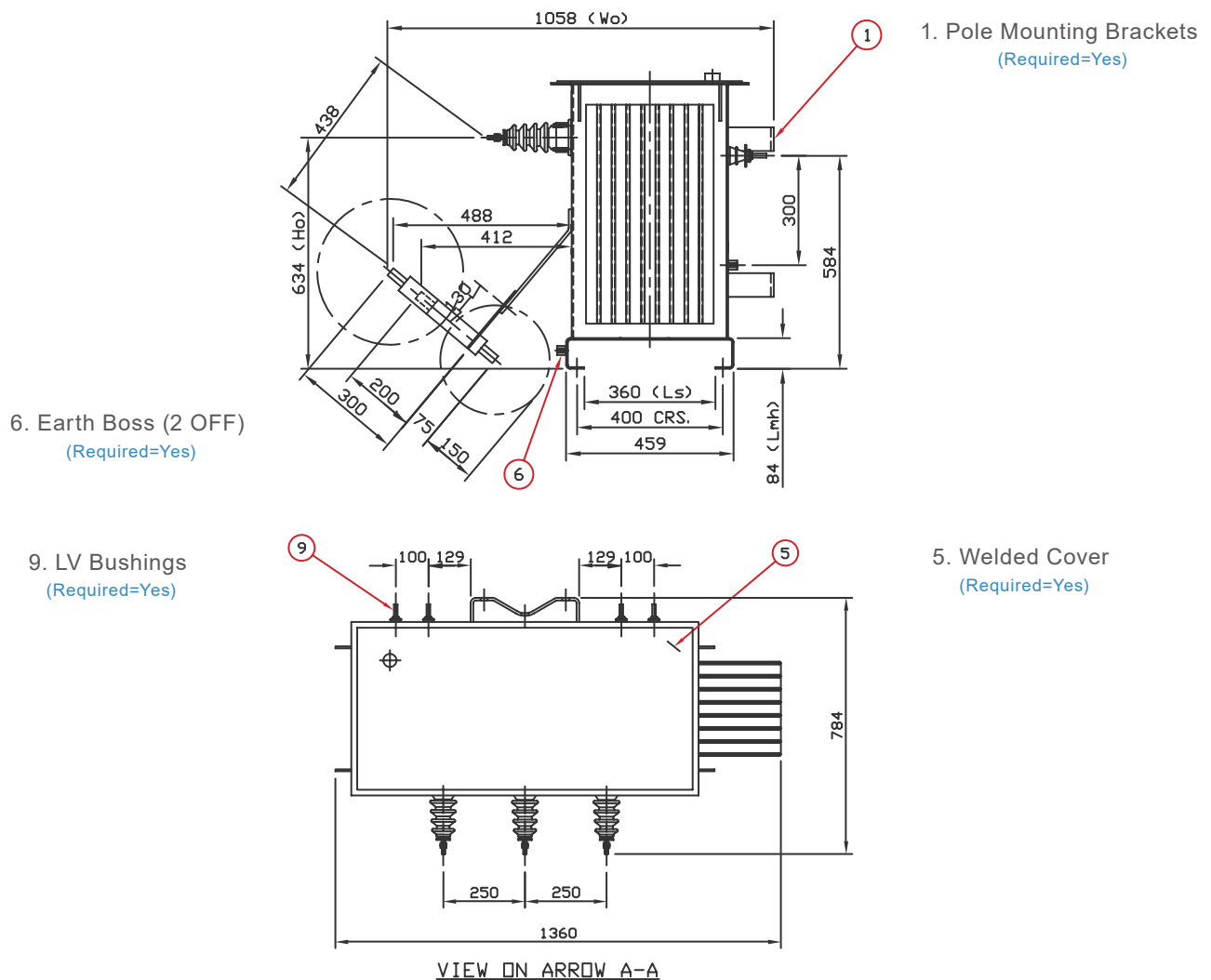
Oil Litres	189	LT
Core & Wind Mass	255	KG
Total Mass	605	KG

1. 8mm Thick Pole Mounting Brackets
2. Threaded Rods, Nuts and Spring Washers supplied
3. LV Bushing Stem is M12
4. Taps to be $\pm 6\%$ & $\pm 3\%$ (Off Circuit)
5. The LV Earth Boss is Directly Below the 'n' Bushing
6. Lifting Lug Holes $\varnothing 35\text{mm}$
7. Voltage Stated is the Off-Load Voltage

DISTRIBUTION TRANSFORMERS

11 000/420 Volt Three Phase

General Third Angle Projection (Scale 1:10)



Additional Information:

Oil Litres	189	LT
Core & Wind Mass	255	KG
Total Mass	605	KG

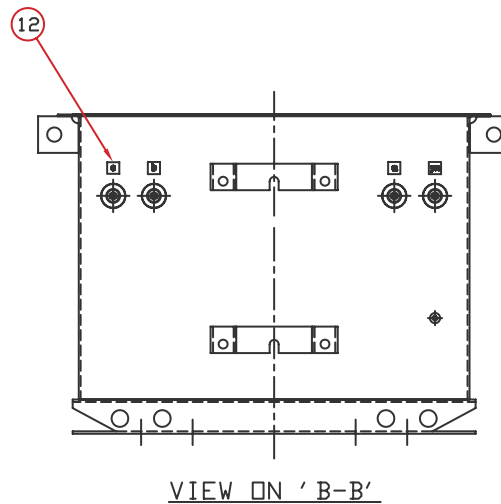
1. 8mm Thick Pole Mounting Brackets
2. Threaded Rods, Nuts and Spring Washers supplied
3. LV Bushing Stem is M12
4. Taps to be $\pm 6\%$ & $\pm 3\%$ (Off Circuit)
5. The LV Earth Boss is Directly Below the 'n' Bushing
6. Lifting Lug Holes \varnothing 35mm
7. Voltage Stated is the Off-Load Voltage

DISTRIBUTION TRANSFORMERS

11 000/420 Volt Three Phase

General Third Angle Projection (Scale 1:10)

12. Phase Lables
(Required=Yes)



Product Information:

Rated Power (kVA)	No Loss Watts	Full Load Loss Watts	Impedance (%)	Length (mm)	Width (mm)	Height (mm)	Oil Volume (Litres)	Total Mass (kg)
25	120	570	3.6	959	739	688	113	390
50	180	1 000	4.5	986	787	786	153	430
100	300	1 700	4.5	1 262	840	710	196	605
200	520	2 700	4.5	1 460	901	816	290	800
315	720	3 800	4.5	1 545	1 125	835	380	1 660
400	910	4 500	4.5	1 639	1 618	900	400	1 476
500	1 100	5 400	5	1 652	1 102	932	495	1 770
630	1 300	6 400	5	1 950	1 800	1 600	495	1 946
800	1 600	8 000	5	2 122	1 953	1 567	612	2 305

Address: 4 Branch Road, Germiston 1401, P.O. Box 678, Germiston 1400

Complete your Project:

Please select the items you require and we will be in touch

Cables and Wires:

Indoor
Outdoor
General
Other
Let an ACTOM
Specialist Contact you

Lighting:

Indoor
Outdoor
General
Other
Let an ACTOM
Specialist Contact you

Transformers (Distribution):

Indoor
Outdoor
General
Other
Let an ACTOM
Specialist Contact you

Accessories:

Indoor
Outdoor
General
Other
Let an ACTOM
Specialist Contact you

Specific Information:

Address: 4 Branch Road, Germiston 1401, P.O. Box 678, Germiston 1400

For more Information on this Product Please Send us the Following

Product Information:

Product Name:

Quantity:

Project Name:

Date the Product is required:

Your Contact Information:

Name and Surname:

Company:

Email:

Phone Number:

Province:

Thank You

For having a Look at this Product

Please send this PDF back to us with all your Information

Scan the QR Code to visit our Website:

